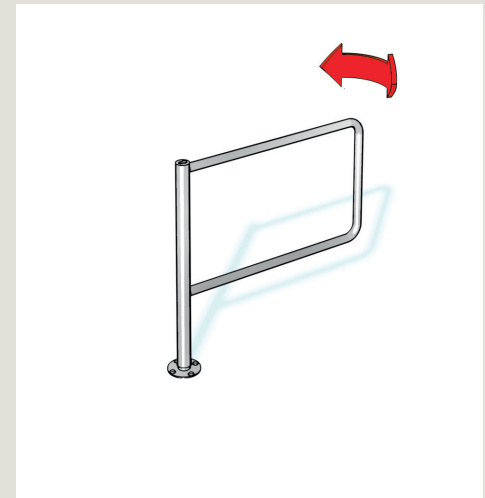


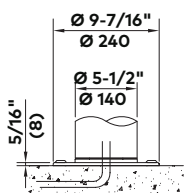
HSD-L01

Half-height swing doors

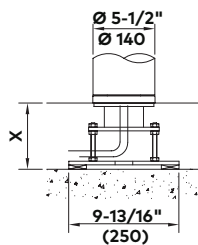
Standard units	HSD-L01
Construction	
Tubular column	Made of AISI 304 stainless steel, \varnothing 2-3/8" (\varnothing 60).
Barrier element	U-shaped, \varnothing 1-9/16" (\varnothing 40) made of AISI 304 tubular stainless steel.
Leaf radius	35-7/16" (900)
Leaf upper edge	35-7/16" (900)
Finish	Stainless steel satin finish.
Function	Type 0: Manual operation. 90° opening in entrance and exit directions, mechanically lockable in three positions.
Installation	Dowelled on finished floor level, FFL. Not suitable for outdoor installation.



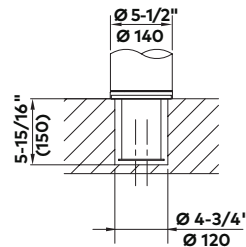
Installation alternatives



Dowelled on finished floor (standard)



With mounting plate on subfloor level

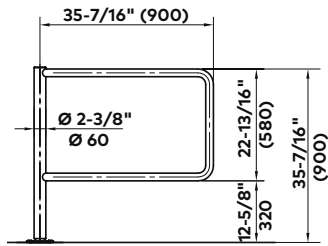


Cast-in in finished floor level

Note

Dimensions shown as inches followed by millimeters; for example, 1" (25).

Elevation drawing



HSD-L01

HSD-L01 options

Construction

Passage width 39-3/8" (1000).

Passage width:
min. 25-9/16" (650), max. 47-1/4" (1200).

Special leaf width: minimum 25-9/16" (650).

Door leaf panel in TSG (sealed at the top and bottom).

Special height:
Door leaf raised to max. 47-1/4" (1200), 55-1/8" (1400).

Installation

Mounting plate with variable substructure, measure X = 3-1/8" – 7-1/16" (80 – 180).

Cast-in with floor element.